

COMPLETE
FLEET
MANAGEMENT
SOFTWARE

CCTV
CAMERA
INSTALLATION AND
SERVICE

GPS E-LOCK

ESECURE WINGS

Know Startup VTS



Startupvts is a fleet management solution for any type of enterprise vehicle including cars, trucks, bikes, buses, and more.

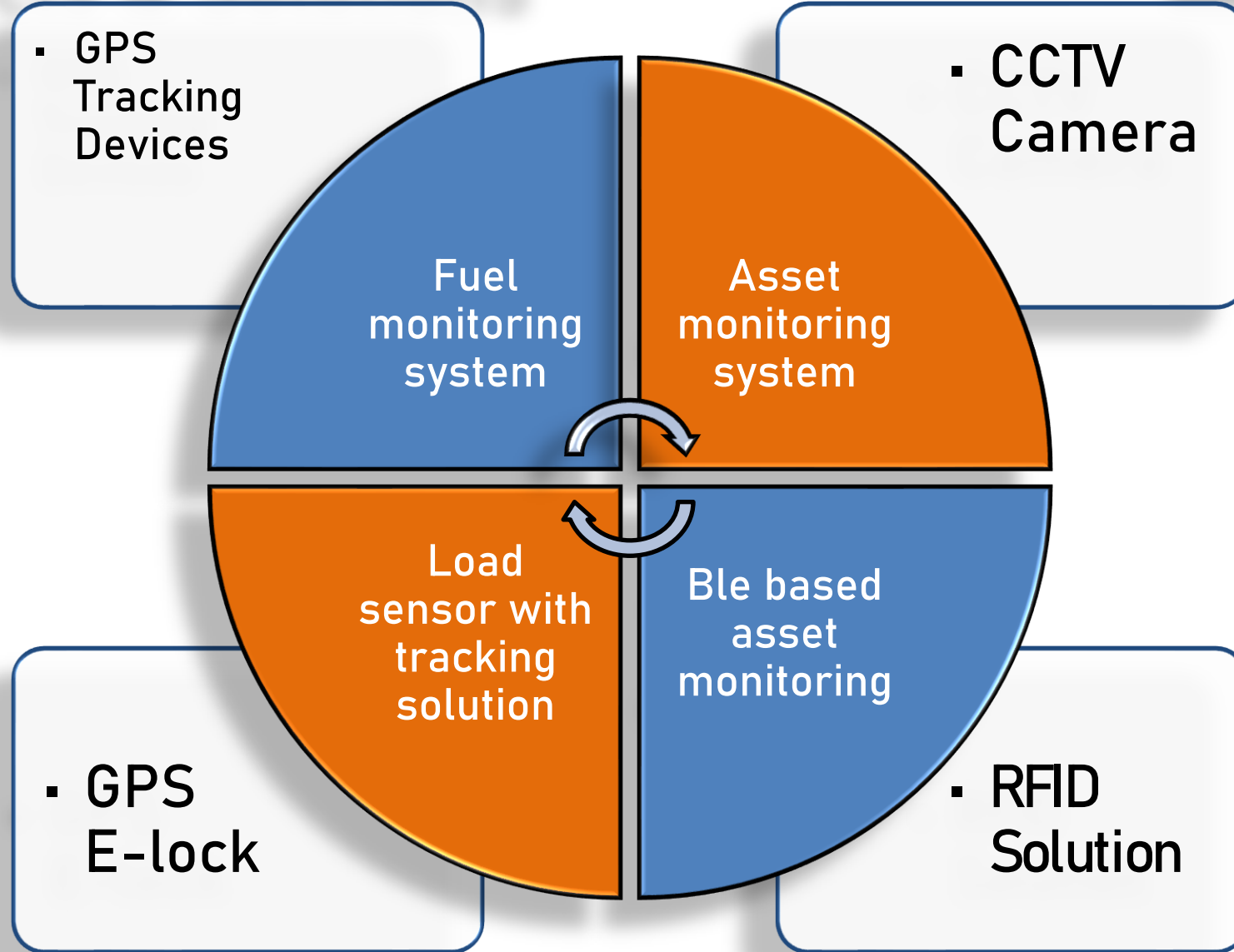


Users can track their fleet, monitor maintenance requirements, assess driver performance, generate custom reports, and setup alerts using the cloud-based system.



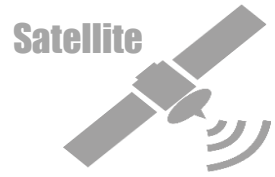
Startupvts facilitates live tracking of vehicles, and the progress of each individual driver can be tracked within the GPS tracking module.

Our Products & Solutions



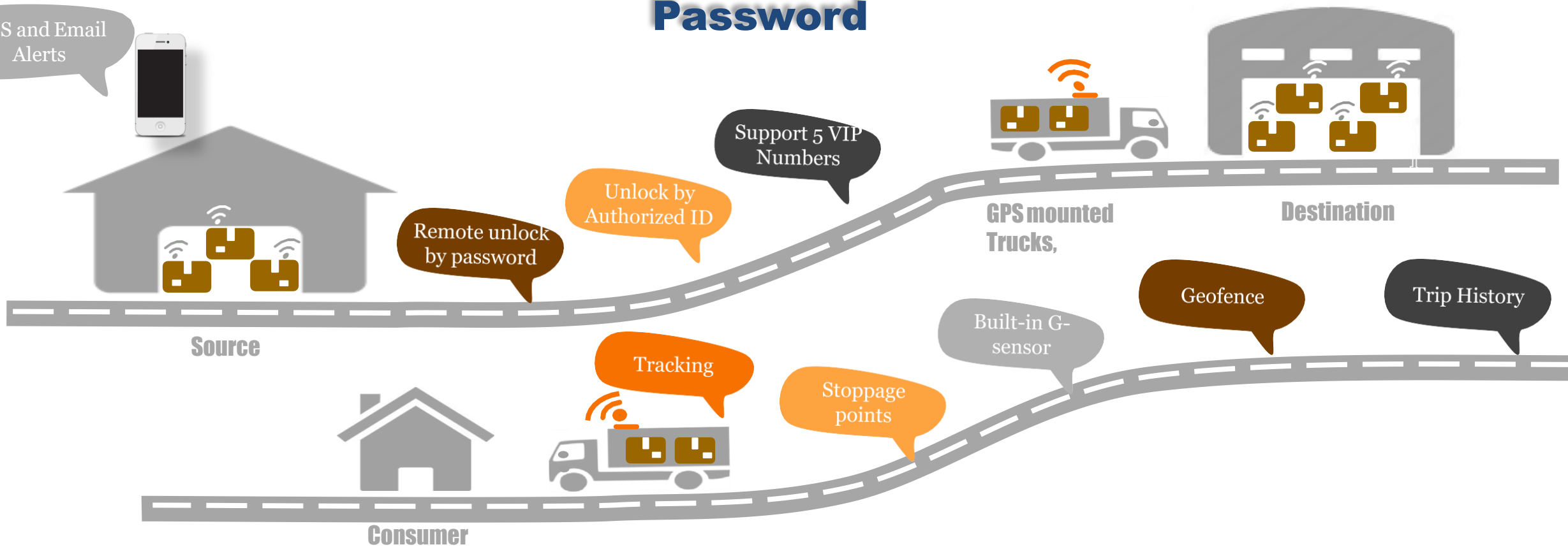
FEATURES

GPS AND RFID BASED SOLUTION



**Alarm : Vibration, Locking Strips tamper,
Swipe Cards Unlock, Geofence, Wrong
Password**

SMS and Email Alerts



Our GPS Range

FMB-120



V7



FMB-920



V5



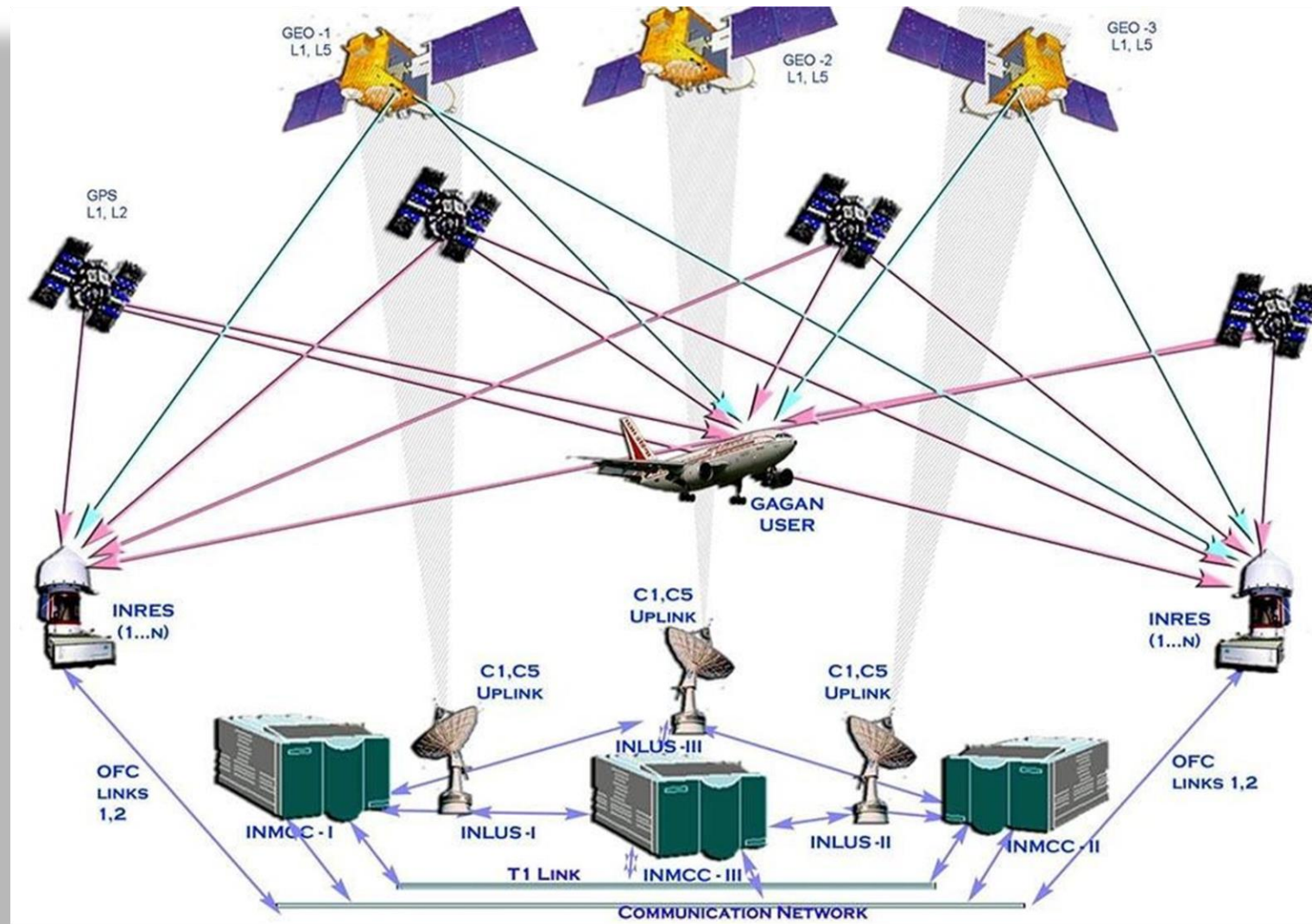
EV-02



BW-08



Mining GPS

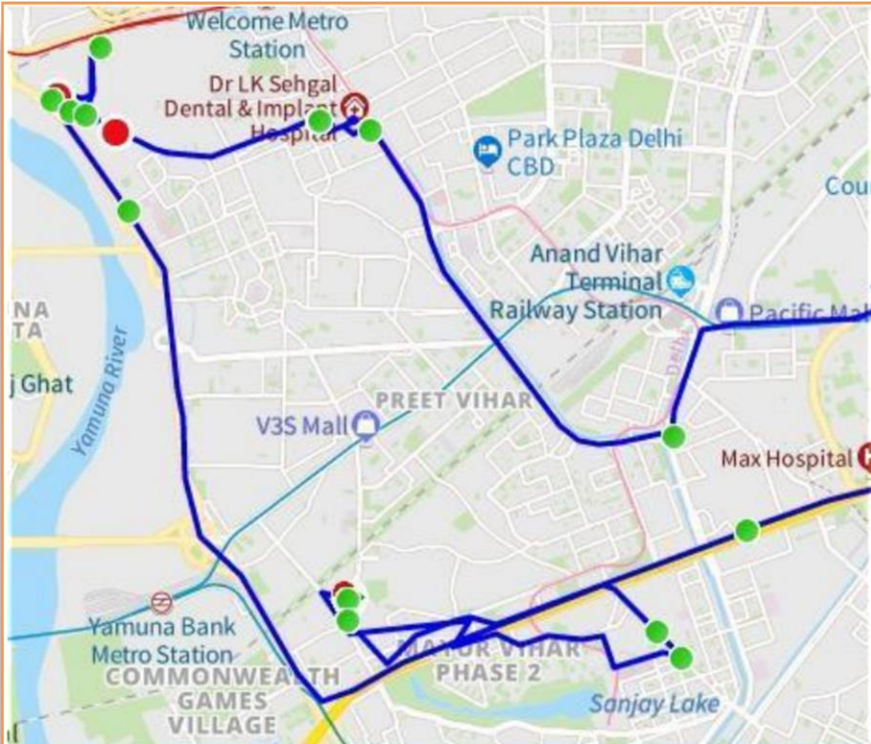
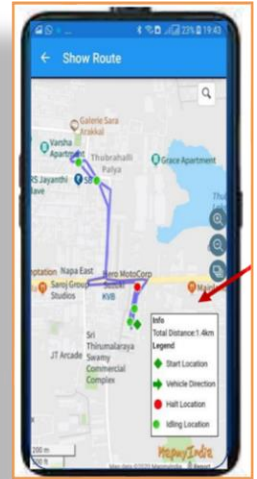


CCTV Camera Installation and Service



ASSET-SMART : Real-time Temperature and Location Monitoring Solution

- ➔ Live Temperature and Location tracking.
- ➔ Temperature accuracy: 0.5 deg C
- ➔ Web/Mobile App to track from anywhere in the world
- ➔ Configurable App Alerts, SMS Alerts, email Alerts.
- ➔ Local storage in case of temporary network outages
- ➔ Works for several days on a single recharge



ASSET-SMART
AST3Ra

Temperature
Sensor

ASSET-SMART : Live Temperature Location Monitoring Solution : Login



Vehicle	VehicleInfo	UpdateDate	UpdateTime	Location	Speed	Status	BatteryStatus
<input type="checkbox"/>	32951 32951 916366832105	06/11/2020	03:27:55 PM	,State Highway 57, Khekra, Haryana	0	●	5%
<input type="checkbox"/>	32842 32842 915754080364935	06/11/2020	04:16:48 PM	A24, Gali Number 4, Ganesh Nagar I South, South, Block A, Ganesh Nagar 1, Ganesh Nag, New Delhi - 110092, East Delhi, Delhi	0	●	40%
<input type="checkbox"/>	32844	06/11/2020	02:40:23 PM	25 Feet Road, Block C, Chanakya Place I, Sitapuri, New Delhi - 110046, South West Delhi, Delhi	0	●	80%
<input type="checkbox"/>	32813	06/11/2020	03:56:10 PM	Gurgaon, Gurgaon District, Haryana	0	●	70%
<input type="checkbox"/>	32807	06/11/2020	01:40:43 PM	Ring Road, Indira Nagar, Lucknow,Lucknow 226016, Lucknow, Uttar Pradesh	0	●	60%

ASSET-SMART : Temperature Monitoring Solution : Temperature Report

Temperature Report			
Vehicle: 32813 From:01/11/2020 To:01/11/2020			
Date	Time	Location	Temperature
01/11/2020	06:40:11 AM	Innovative Retail Concepts Pvt Ltd , Basai-5KDS, Khasra no. 367/1, Basai Village, below Railway flyover, Gurugram, Haryana-122003	2.94
01/11/2020	06:40:12 AM	Innovative Retail Concepts Pvt Ltd , Basai-5KDS, Khasra no. 367/1, Basai Village, below Railway flyover, Gurugram, Haryana-122003	2.94
01/11/2020	06:42:57 AM	Basai DC, Khasra no.367/1 Basai Village ,Below railway flyover, Gurugram-122003, Haryana	2.94
01/11/2020	06:44:21 AM	Gurgaon, Gurgaon District, Haryana	3.00



VEHICLE BIOMETRIC SOLUTION:

Biometric device mounted in a vehicle at an appropriate place and connected to the VTS device, communicates in real time. The owner can view, track and take necessary action from any where in the world on his mobile or laptop by using dashboard or an app. It is easy to install and easy to use. In a car and truck, it may be conveniently mounted at the driver dash board, in a bus or school van it may be mounted at entry/exit door. Telematics integrated with biometrics for finger print verification gives host of feature and enables the fleet safety and efficiency significantly. Some of the feature and usages listed below Biometric hardware

- ➔ Robust optical finger print reader
- ➔ Remote finger print enrolment
- ➔ 250 finger print registrations per device
- ➔ Success/failed scan visual and audio indicato

Features:

- Driver authentication
- Driver authentication
- Driver login logout detection-for duty start and duty end
- Trip tag in tag out of driver
- Attendance monitoring

Reports:

- Driver tagging reports
- Driver trip reports
- Attendance reports



Seat Belt Solution Alarm with Immobilizer

Product Technical Specifications:

- ➔ Heavy Duty Seat Belt Black Color
- ➔ Retractable type
- ➔ 120dB Alarm
- ➔ 12 V DC connection
- ➔ When seat belt buckle removed alarm will come and the vehicle will not start
- ➔ Customized seat and immobilizer with working voltage also available on request



TraQloc- 300

Product Technical Specifications:

- ➔ Model traQloc-300
- ➔ Appearance Lock body size 99X75X41 mm
- ➔ Material Aluminum Alloy body, 304 stainless steel, DIA: 9mm
- ➔ Communication 1. Support 13.56MHZ IC seal operation
2.Support GPRS, GSM 850/900/1800/1900MHZ,
3. Support Bluetooth version4.0 & SMS management
- ➔ Location UBLOX GPS module, the precise scope of 10 m
- ➔ Display 0.96 inch OLEO screen , support low battery, signal and lock state etc.



Lock/ unlock :- Support methods: RFID key card, SMS, Web-platform, mobile APP, Bluetooth Password on front panel, Auto unlock on pre-configured date & time.

Alarm :- (i).Low battery alarm (ii) .Anti-break and anti-cut alarm (iii) .Illegal demolition alarm

Security & Strength :- High strength alloy, stainless steel lock rod embedded. Using mechanical and electronic double closure, the lock rod seal resistance(refers to directly stimulate the lock rod)> 100k

Battery :- 1. Battery 6000MAH endurance ability: 5-180 days (depend on the setting of return interval, real-time tracking mode and preset modes of the platform are supported) 2. Stand-by consumption 0.2mA 3. When the power consumption will excess the limit, the data and lock state will be saved into sleep mode.

Storage 2M Flash, >8000 blind spot data stored

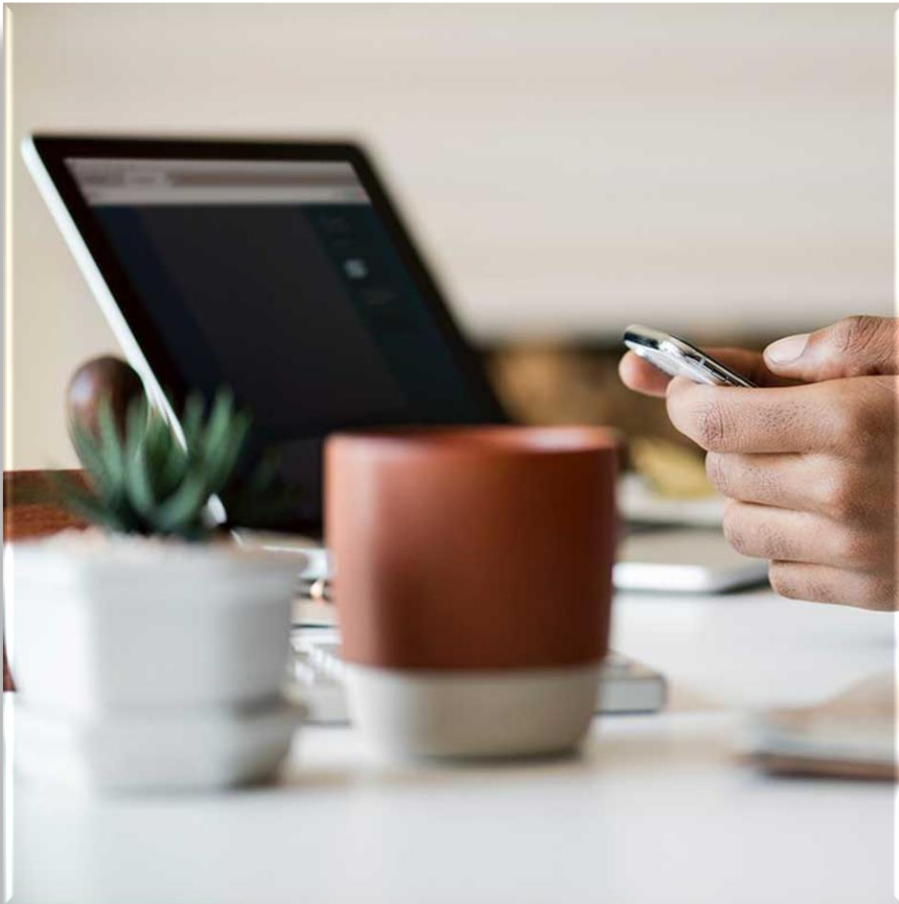
Charger port DC 5.5 interface (DC 5V/3A)

Dashboard

Startupvts simple yet advance dashboard helps to keep user updated on the fleet in just 15seconds. All vital information are listed in this single dashboard.

Available

- Complete fleet statistics
- Real time object status
- Fleet Live location
- Categorized fleet
- Total Fuel usage of Fleet



Advance Tracking System

Live tracking is one of the major functionality of GPS software. It provide ultimate fleet tracking solutions that can show real-time vehicle progress.

- Real-time tracking of many objects
- Cloud-based real-time database enables quick alerts
- Finds shortest route
- Share real time objects at single click

Reports

Simple yet neat and easy to understand tracking reports that can help to make smart decisions whenever any doubt arise.

- Activity Report
- Single or multiple group of object selection
- Dynamic time-frame selection
- Download report in different format
- Easy scheduling
- Customize Report as per requirement

Charts

Various types of charts like Distance, Durations, and Alerts are available with the large number of filter options. It provides high-quality charts to represent complex data of vehicle tracking system.

- Charts make the vision of the reports in simpler form.
- Textual analytics with graphical representation.
- Filter object by status in single click
- Download in textual or graphical form

Alerts

Alert notifies the users about certain situations and assist them to provide support on time. It provides essential information through GPS live tracking alerts useful to the supervisors in managing their fleet with less efforts.

- Multiple alert on multiple object on single screen
- 50+ Alerts are supported
- Alert can be received via SMS, Email or App notification
- One alert can be generated for multiple recipients
- Define personal conditions in any alerts

RFID

RFID tags enable vehicle and driver identification using radiofrequency.

- RFID allocation on drivers and addresses.
- Know when driver is allocated to a vehicle.
- Know when vehicle reaches addresses/POIs.

SOS Enable GPS:

- Live remote tracking

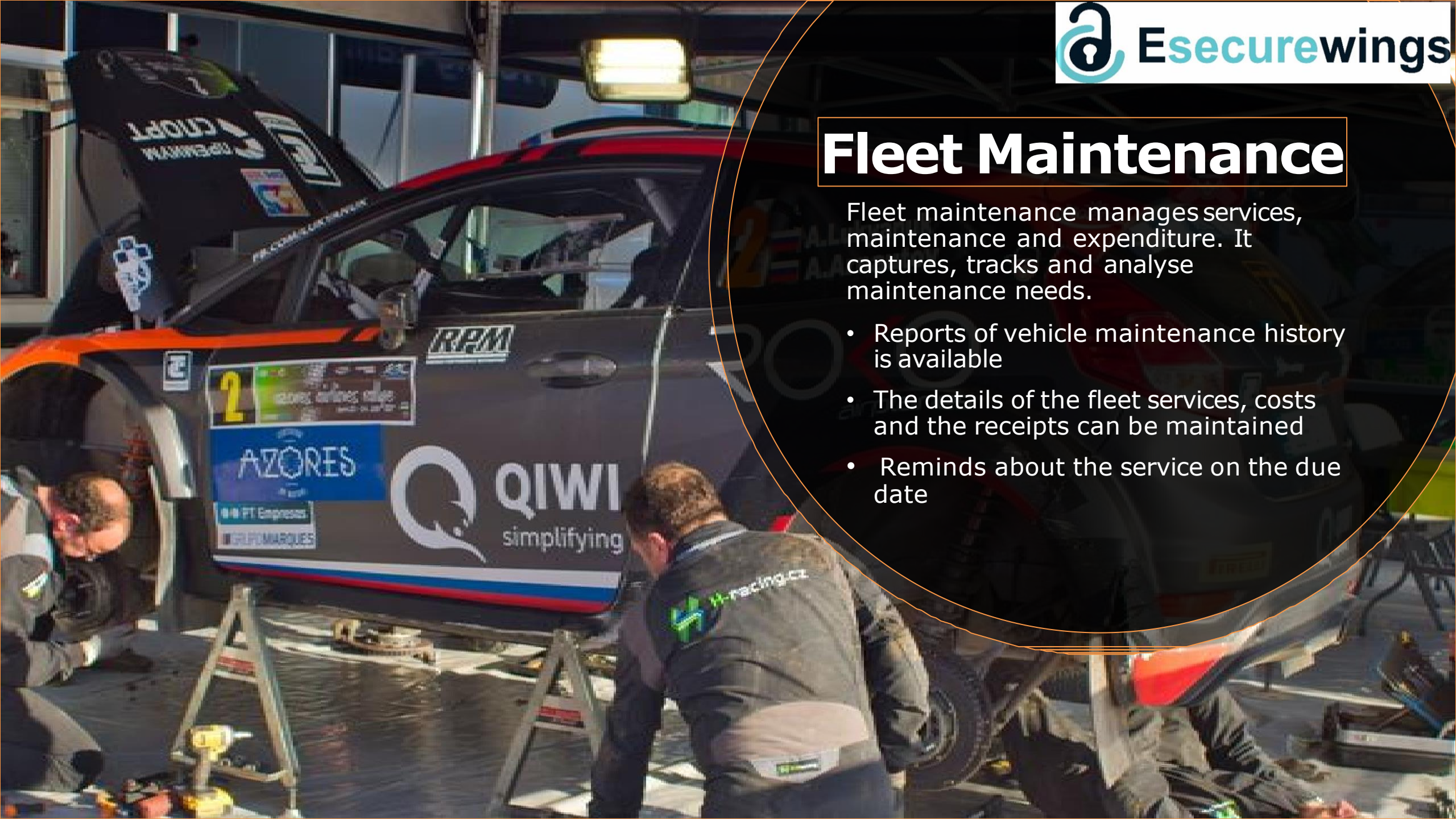
Immobilizer and SOS

- Immobilize vehicle remotely from the Web and Mobile applications
- SOS event alert and report
- Find nearby hospitals and police stations during SOS event.

Fleet Maintenance

Fleet maintenance manages services, maintenance and expenditure. It captures, tracks and analyse maintenance needs.

- Reports of vehicle maintenance history is available
- The details of the fleet services, costs and the receipts can be maintained
- Reminds about the service on the due date



Fuel Monitoring

Fuel monitoring systems maintain, control and check the fuel consumption. It helps to control the expense on fuel.

- Monitors real-time fuel level, fuel consumption, and fuel refilling details in the fleet
- Reports and alerts for fuel levels, drop in fuel level, theft or leakage in tank are generated.

Tyre Management

Tyre management system monitors and maintains tyres. It ensures that tyres are inspected, rotated, repaired and retreated.

- Reports of tyre performance, expense, inventory needs and rotation time are maintained
- Details of tyre maintenance can be maintained
- Tyre pressure monitoring system checks the air pressure of the tyres

MDVR

MDVR shows live video, then stores the data and track the fleet. Video can be used as evidence in case of problem arise.

- Real time HD video and audio are recorded
- Recording of fleet history are available
- Video of inside and outside of the car are captured

OBD Analytics

OBD helps to monitor the health of the vehicle. It ensures that the vehicle doesn't have any issues by giving information on engine temperature and battery voltage

- Stores the Diagnostic trouble code to identify the fault
- Fleet self-diagnosis and gives reports

Temperature

Dizitek monitors the temperature of the storage vehicle.

- Real time temperature monitoring
- Temperature violation alerts through email or SMS
- Ongoing temperature updates at regular intervals
- Temperature history report of the storage during the complete travel time



Geofence & POI

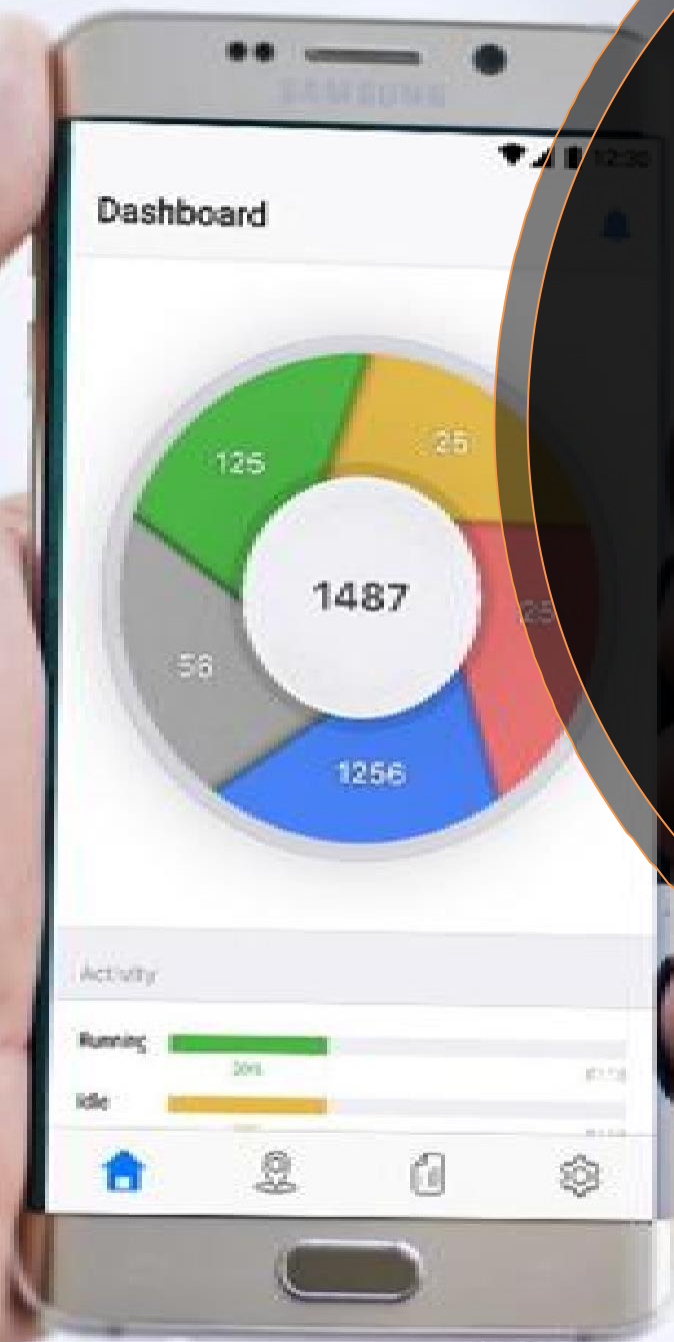
Geofences can be setup in order to limit driver diversions, and points of interest can be highlighted within the map.

- Defines geographical boundaries with GPS
- Define perimeters
- Notifies when the vehicle crosses the geofence or POI area

Mobile App

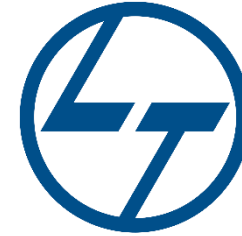
Startupvts mobile app is available in Android and iOS. It helps you operate Dizitek from anywhere.

- Fleet can be managed with the App
- Device can be added
- Alert can be obtained
- Reports are available
- Real- time tracking
- Accurate Travelsummary



Our customer

- ➔ L&T Construction
- ➔ Narendra flexi pach Co Pvt Ltd
- ➔ Jeetsons distillery& industries Limited



Our associates and partner company

- ➔ Bizzmantra business associates Pvt Ltd
- ➔ IMZ Corporate Pvt Ltd
- ➔ Gtropy systems Pvt Ltd



Thank You

Support@esecurewings.com

Sales@esecurewings.com

Mobile: +91- 70535 46141

Office address-5d/8e railway road nit Faridabad haryana-121001

Landmark-behind Nexa showroom